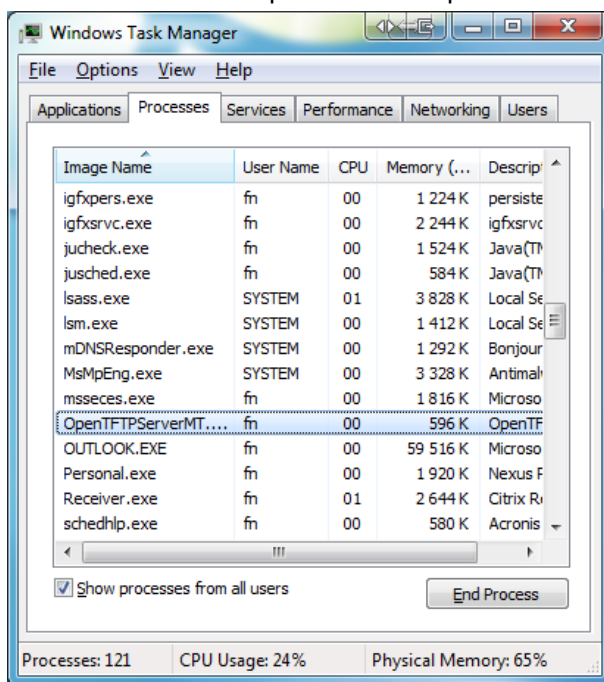


Instructions for the Terraloc Pro SW Upgrade package:

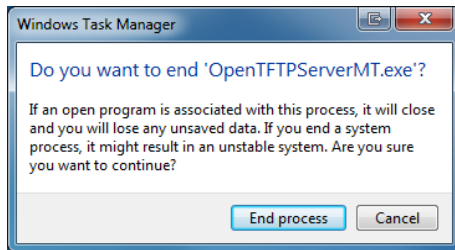
Please read the entire instruction before starting

1. Extract the ZIP file and copy the folder “Terraloc Pro SW Upgrade” to a USB memory stick
2. Connect the office power supply *AND* a charged internal battery
3. Connect a mouse and keyboard to the Terraloc Pro via USB
4. Power on Terraloc Pro and let SeisTW start
5. Press Enter
6. On the keyboard press “Ctrl” + “Shift” + “Esc” at the same time
7. The Windows Task Manager will open
8. Scroll down the list of process until OpenTFTServerMT is found. Select it and press “End Process”



Do the same procedure for the process “XYNTService.exe” and “primary.exe”.

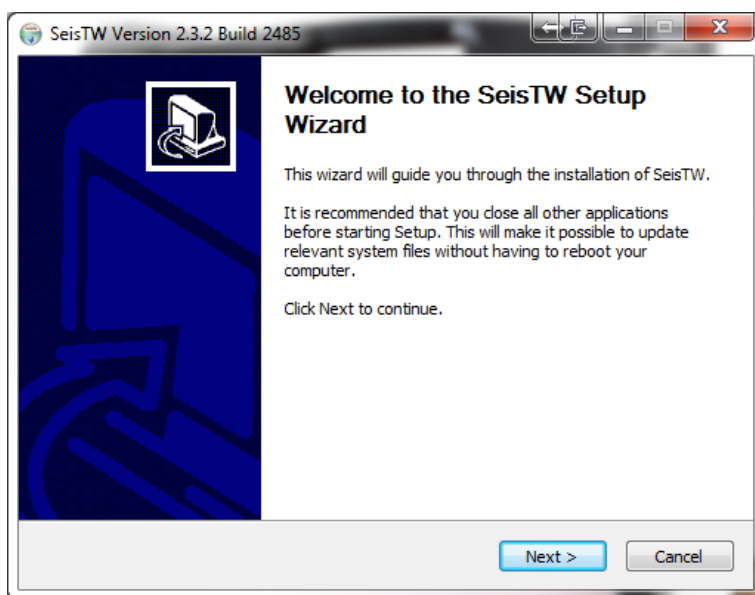
9. Confirm to end the process by pressing “End process”



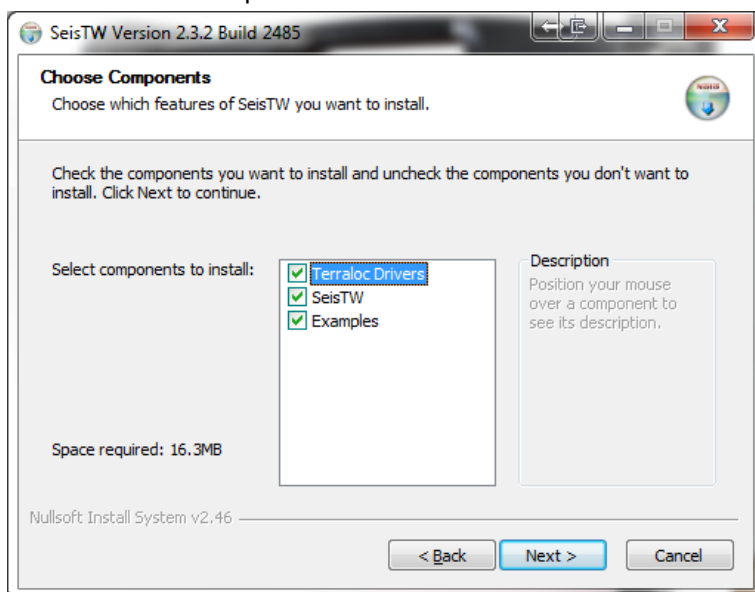
10. Open the “Terraloc Pro SW Upgrade” folder and browse to the sub folder “1_SeisTW”

11. Start the upgrade of SeisTW by double clicking the file “SetupSeisTW-2.4.2.2611.exe”

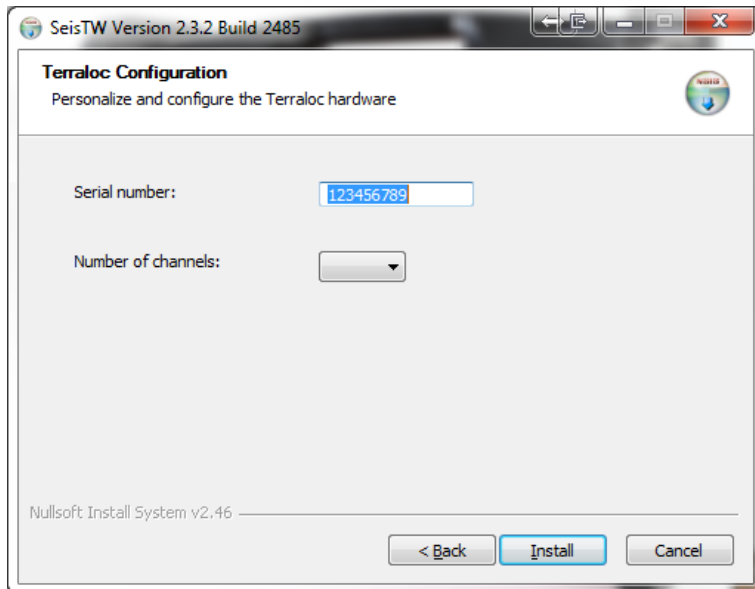
12. Press “Next >”



13. Check all boxes and press “Next >”



14. Enter the serial number and number of channels for your instrument



The serial number is written on the serial number plate on the power panel (left side) of the instrument. On the serial number plate it is also written the instruments number of channels.

Please note that it is the number of measurement channels plus the two reference channels that is to be entered. So for a

12 channel instrument, select 14

24 channel instrument , select 26

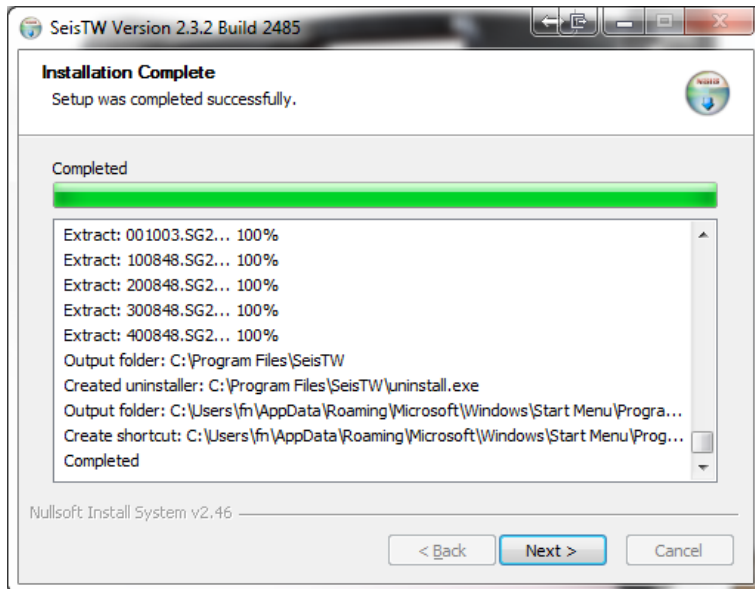
36 channel instrument, select 38

48 channel instrument, select 50

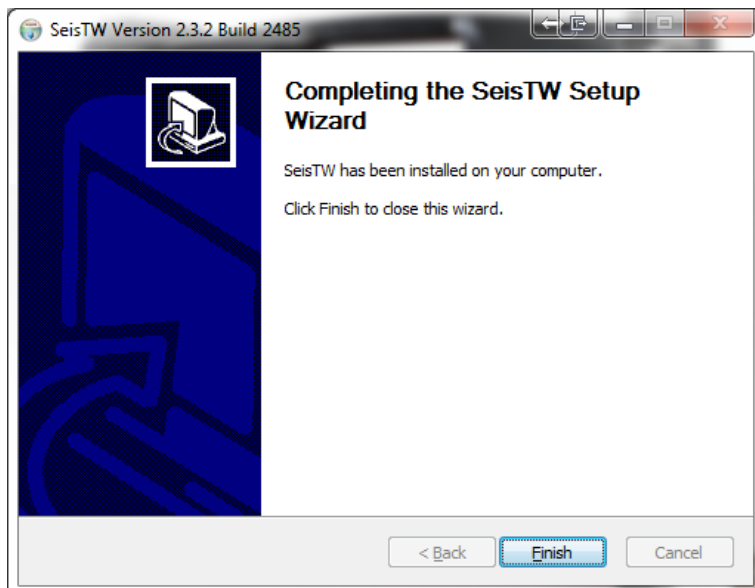
Then press "Install"

15. The installation process will start

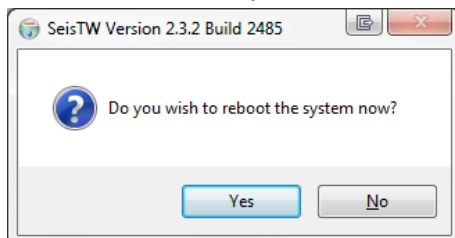
16. When finished it will say “Completed” in the log window. Then press “Next >”



17. Press “Finish”



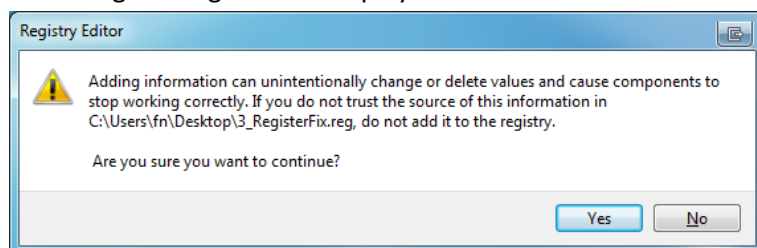
18. Do NOT restart the system. Press “No”



19. Open the “Terraloc Pro SW Upgrade” folder and browse to the sub folder “2_RegisterFix”

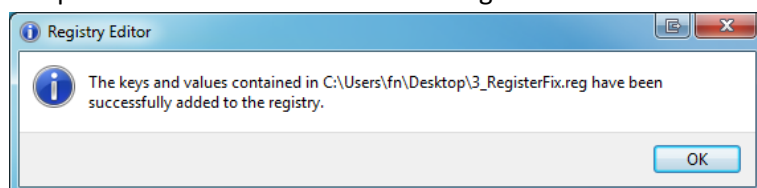
20. Double click the file “2_RegisterFix.reg”

21. A warning message will be displayed



22. Press "Yes"

23. The process is finished when this message is shown. Press "OK"



24. To complete the Terraloc Pro software upgrade the Terraloc Pro is to be completely powered off.

Please note that this does not only mean shutting down the Terraloc Pro. The office power supply (or any other external power source) AND the internal battery must be disconnected.

25. The internal battery and/or external power source can now be connected and the instrument powered on.

To verify the installation start the Terraloc Pro and let SeisTW start. Once started use the mouse to select "Help/About", or use the internal keyboard and press "Shift" + "HLP". In the dialogue box appearing check that the row called Version is saying 2.4.2.2611 .

For any questions or problems during upgrading please contact ABEM support by +46 8 56488300 or support@abem.se